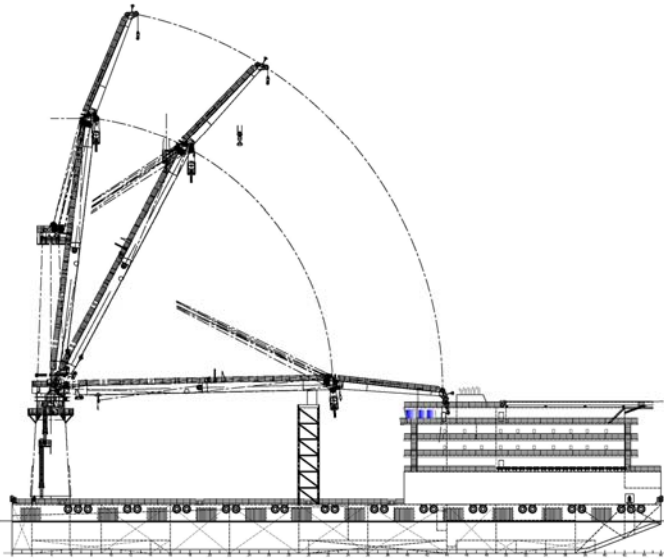




New Construction  
**Derrick Barge**  
 (DB-3)



STATUTORY INFORMATION	
Flag Administration	Vanuatu
Official No.	TBD
Classification	ABS +A1 Barge
PRINCIPAL DIMENSIONS	
Length	120.0 m
Breadth	31.7 m
Depth	9.0 m
Draft (Design)	6.5 m
CAPACITIES	
Ballast Water	16,000 m <sup>3</sup>
Fuel	2,000 m <sup>2</sup>
Potable Water	1,800 m <sup>2</sup>
Deck Loading	12.5 tonnes/m <sup>2</sup>
ACCOMMODATIONS	
Living Quarters	300 Total
1-man cabins	8 Qty
2-man cabins	14 Qty
4-man cabins	66 Qty
Galley	150-man seating
Office Spaces	7 Qty
Recreation Spaces	4 Qty
STRUCTURE	
Main Deck Plating	16 mm
Bottom Shell	14 mm
Side Shell	12 & 14 mm
Frame Spacing	1830 mm
Bulkheads	10 & 12mm
Deck Height	3000 mm
Clear Height	2200 mm
MACHINERY	
Main Generators	(6) Diesel Generators@ 590kw, 480v, 3Ø, 60hz
Main Engine Type	CAT 3512 DITA c/w Leroy Somer Generator
Emergency Generator	(1) CAT 3056 DIT 99kw, 480v, 3Ø, 60hz
Crane Emergency Back-up Generator	(1) CAT C4.1 DITA 72 kw, 480v, 3Ø, 60hz

SHIPBOARD SYSTEMS	
Ballast Pumps	(2) 500 m <sup>3</sup> /hr @ 30m each
Fire/Gen Service Pumps	(2) 130 m <sup>3</sup> /hr @ 80m each
Fire/Foam Monitors	(2) 225 m <sup>3</sup> /hr @ 89m each
Fuel Oil Transfer Pumps	(2) 45 m <sup>3</sup> /hr @ 45m each
Potable Water Transfer Pumps	(2) 120 m <sup>3</sup> /hr @ 35m each
Fresh Water Maker	(2) 150-Tons / Day each
Air Compressors	(2) 175 cfm @ 10 Bar each
FIREFIGHTING & LIFESAVING	
Liferafts	(18) 25-Man rafts per side
Fire Sprinkling Sytems	Living Quarters Area
Fixed CO <sub>2</sub>	Engineroom Areas
<i>Portable Firefighting, Lifesaving, Fire Detection, General Alarm, Public Address &amp; Telephone Systems installed throughout barge in accordance with IMO SOLAS regulations.</i>	
HEAVY LIFT OFFSHORE MAST CRANE	
Main Hoist	(14-falls) 800mt @ 26.7m Min. Working Radius 8.5m Max. Working Radius 52.0m
Hoisting Speeds	Full Load: 3.4 m/min Reduced Load: 8.5 m/min
Auxiliary Hoist	(4-falls) 120mt @ 35.0m (2-falls) 40mt @ 72.0m (Single) 20mt @ 72.0m Min. Working Radius 16m Max. Working Radius 72m
Hoisting Speeds	(4-falls) Full Load 8 m/min (2-falls) Full Load 24 m/min (Single) Full Load 48 m/min
Tugger Winches	(3) 25mt @ 12m/min
Sling Hoist	(2) 10mt @ 25m/min
Max. Simultaneous Pow.	1200 KW
MOORING SYSTEM	
Anchors	8 Qty; 12-Ton Delta-Flipper Type
Anchor Wire	52mm @ 1500m each
Mooring Winches	8 Single Drum, Hydraulic 150-ton Brake Holding w/ 30-ton Constant Tension
<small>(c/w pipelay controls for 40-ft, single push button operations)</small>	
Rated Pull (1 <sup>st</sup> Layer)	130-Ton @ 9 m/min (low speed) 20-Ton @ 30 m/min (high speed)
Rated Pull (Top Layer)	62-Ton @ 21 m/min (low speed) 9.5-Ton @ 63 m/min (high speed)